

## EVOLUTION REVIEW SHEET

### PART 1: Definitions

Evolution \_\_\_\_\_

Adapatation \_\_\_\_\_

Natural Selection \_\_\_\_\_

Mutation \_\_\_\_\_

Variation ("variety") \_\_\_\_\_

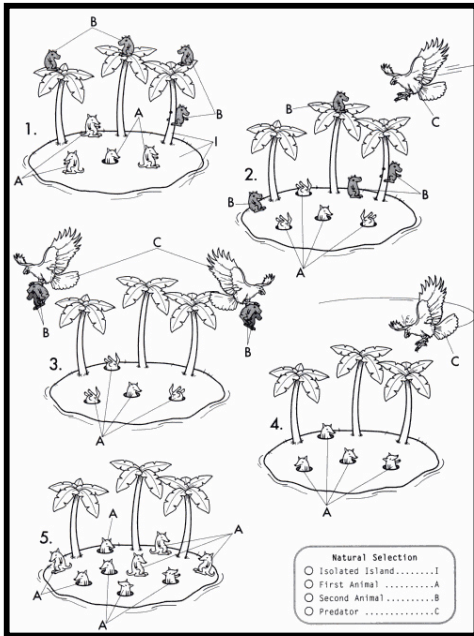
Overproduction \_\_\_\_\_

### **PART 2:** Important concepts. Answer the questions below. Use your notes and homework.

1. What two factors can cause mutations to DNA?  
\_\_\_\_\_ and \_\_\_\_\_
  
2. What are three ways that organisms will need to adapt to their environment?  
\_\_\_\_\_, \_\_\_\_\_, and \_\_\_\_\_
  
3. Which comes first natural selection or evolution? Why?  
\_\_\_\_\_  
\_\_\_\_\_  
\_\_\_\_\_
  
4. What are two pieces of evidence used to prove that some species or more closely related to other species?  
\_\_\_\_\_ and \_\_\_\_\_
  
5. CHARLES DARWIN:
  - a. Where did he travel? \_\_\_\_\_
  
  - b. What was the name of the famous book he wrote about evolution?  
\_\_\_\_\_
  
  - c. What theory did he introduce in this book?  
\_\_\_\_\_
  
  - d. List two animals that he studied  
\_\_\_\_\_ and \_\_\_\_\_

### PART 3: Applying concepts

Look at the picture to your left. It shows natural selection occurring in a group of furry black and white creatures on an isolated island through FIVE GENERATIONS.



5. What happened to the number of black creatures over the five generations?

---



---

6. What happened to the white creatures after five generations?

---



---

7. Do you think there are any black genes left in this populations of furry creatures?

---



---



---

8. How does this picture represent natural selection?

---

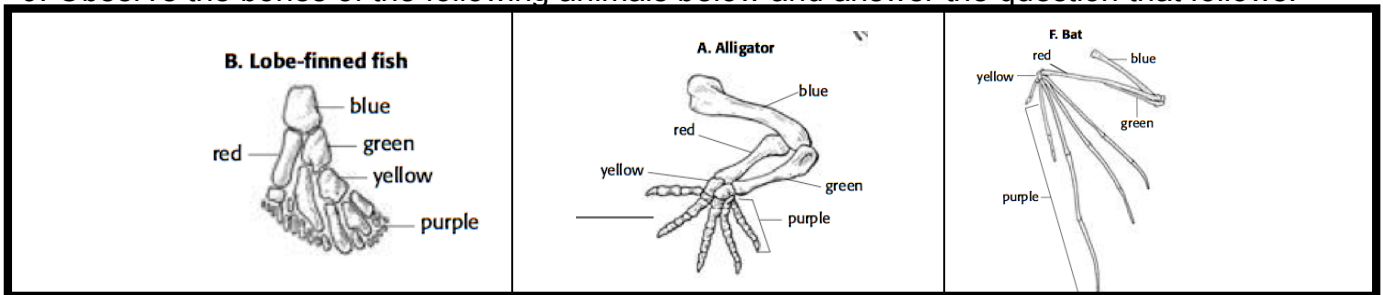


---



---

9. Observe the bones of the following animals below and answer the question that follows:



a. The fin of a fish and arms of an alligator and bat are very different but they show some common structures. Why is that?

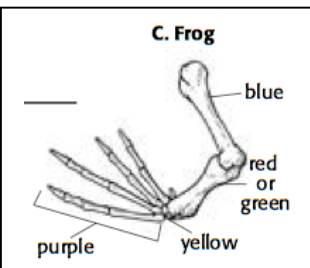
---



---



---



b. Observe the three bone structures above. Which one of the three (Lobe-finned fish, alligator, and bat) do you see as being more closely related to the frog (on the left)? Explain why.

---



---



---